

GR11000 GOLF GREEN ROLLER MANUAL – Operation, Maintenance & Parts Manual



IMPORTANT

PLEASE READ AND UNDERSTAND BEFORE OPERATING MACHINE

1. Pre-check all nuts, bolts, grub screws for tightness prior to operating machine.
2. Understand the operating procedures and the controls before operating.
3. Use the machine to roll 18-36 greens then check that all nuts, bolts etc. are tight.
4. **Loose transmission and drive roller sprockets will cause damage to shafts & keyways. Ensure they are correctly tightened at all times.**
5. As a guide to correct transmission oil use **Mobil I 5W-50W Synthetic Oil** or (Australia only – **Penrite Synthetic 5 SAE 5W-60**)

CONTENTS

Page:

- 1. MACHINE INFORMATION RECORD
- 2. SAFETY INFORMATION
- 3. WARRANTY
- 4. INITIAL ASSEMBLY
- 5-7. ASSEMBLY
- 8-9 OPERATION
- 10. MAINTENANCE
- 11. SERVICE OF DRIVE SYSTEM
- 12. MAINTENANCE SCHEDULE
- 13. FAULT FINDING
- 14-27. MACHINE COMPONENTS
- 28-30. PART NUMBERS
- 31. OPTIONAL EXTRAS

SEPARATE ENGINE OWNERS MANUAL INCLUDED

Congratulations on your investment in the GR11000 Golf Green Roller and your move to smoother, faster, more consistent putting Greens. The following operation and maintenance manual has been prepared for use with the GR11000 Golf Green Roller. It is intended as a guide and supplemental updates to the manual may take place at a future date.

This machine is engineered to be simple to operate and easy to maintain. If you have any questions or concerns that this manual does not address, please feel free to contact your distributor at:

NAME: _____

ADDRESS: _____

TELEPHONE: _____

FACSIMILE: _____

MACHINE INFORMATION

GR11000 Golf Green Roller

Serial # _____

Engine # _____

Transmission # _____

Purchase Date # _____

SAFETY INFORMATION

Safety is of the utmost importance when operating turf equipment. To ensure safe operation of the GR11000 Golf Green Roller, please follow the following safety guidelines.

- * Always make a pre-operation inspection before you start the engine. If this procedure is not carried out damage to property or personnel may occur.
- * Keep children, pets and inexperienced personnel away from the machine. This machine should only be operated by trained and skilled personnel - check with your supervisor if you are unsure.
- * Know how to stop the engine when in motion. Read and understand engine manufacturers manual, as supplied.
- * Never permit inexperienced operators to use the machine. This machine requires certain knowledge and expertise to operate it; you must be a trained person to use this machine. Unskilled persons can harm themselves and others if they operate this machine.
- * Do not use in enclosed areas unless well ventilated. Carbon monoxide gases are dangerous if inhaled, it can cause death; use the machine outdoors.
- * When transporting the roller, make sure the trailer lock down mechanism is secure to prevent premature release. If the trailer lock is not correctly engaged while towing and releases accidentally, the front of the roller can drop and dig into the ground, causing the machine to move dangerously in any direction causing bodily injury. This also applies during normal maintenance procedures - make sure the latch is locked in place. When carrying out maintenance ensure the latch is engaged correctly; if it is not the trailer arm could fly up making contact with a person (s) causing serious injury.
- * When engine is running, always keep hands and loose clothing away from rotating chains and sprockets in the transmission area. If hair, clothing or loose objects become entangled on a rotating shaft serious bodily injury could occur. Stop engine before opening safety cover fitted to the transmission area.

OPERATOR, REMEMBER IT IS YOUR RESPONSIBILITY TO BE AWARE OF YOUR SURROUNDINGS. TO AVOID ACCIDENTS, THINK SAFE AND OPERATE SAFE.

TRU-TURF EQUIPMENT

2/56 Export Drive Ernest, Queensland 4214 Australia

Telephone 61 7 5594 7199
Fax 61 7 5571 5493
Email sales@truturf.com
Web www.truturf.com



ONE YEAR WARRANTY

Universal Conditions: Tru-Turf Equipment will either repair or replace any item or part of a Tru-Turf Equipment turf maintenance product that is defective in workmanship or material for a period of twelve (12) months from the date of delivery of the new product to the original end user. These items will be repaired or replaced free of charge and freight free.

Products Protected By This Warranty: This Warranty relates to the following products manufactured by Tru-Turf Equipment and parts used to make these products:- GR39 Golf Greens Roller; GR48 Golf Greens Roller; GR7000 Golf Greens Roller; GR11000 Golf Greens Roller; RS48 Roll 'N' Slice Golf Greens Roller; RS48-11 Roll 'N' Spike Golf Greens Roller; Triplex Roll 'N' Spike Mower Attachment Heads and Brackets; MT2000-S Single Tote for Walk Behind Mowers; MT2000-D Dual Tote for Walk Behind Mowers; Sports Ground Roll 'N' Spike Turf Roller.

Parts Warranted By Suppliers To Tru-Turf: Specific component parts supplied to Tru-Turf Equipment are covered by that supplier's Warranty. These parts include Eaton Transmission, Honda Engines and Kohler Engines.

Normal Wear and Tear: Tru-Turf Equipment will not repair or replace parts subject to normal maintenance routines as specified in the products Operator's Manual nor to parts subject to wear and tear during the correct operation of the product. These parts include, but are not limited to, oils, filters, tyres, shafts, bearings, blades, spikers, slicers, brakes, belts, hoses and spark plugs.

Other Items Not Covered By This Warranty: Tru-Turf Equipment will not repair or replace free-of-charge any item that has been damaged by accident, lack of reasonable care and protection or lack of suitable storage. We will not cover parts that have been altered or modified by anyone other than Tru-Turf Equipment nor will we cover used parts that are installed in place of failed parts. We will not cover parts that have not been installed correctly by the end user or its agents nor will we cover parts that have not been maintained as per the Operator's Manual. Service calls and overtime labour rates will not be covered. We will not cover freight costs related to the return of the faulty product to Tru-Turf Equipment or its agents. Tru-Turf Equipment will not be liable for any consequential loss or damage or costs caused by or incidental to the failure of any new part supplied with the original purchase or any new part supplied as a replacement for any failed part.

Lodging Warranty Claims: The final purchaser of the new Tru-Turf Equipment product must lodge a Warranty Claim with Tru-Turf Equipment or its agents. The final purchaser must provide written evidence detailing the product's delivery date to that purchaser and the reasons why the purchaser believes that the product or its part is defective in the categories of faulty material or workmanship. The purchaser is to deliver the faulty product or part to Tru-Turf Equipment or its agents at the purchaser's expense. Acceptance or rejection of the Warranty Claim is entirely at the discretion of Tru-Turf Equipment or their Suppliers who warrant their own part/s.

No person or organisation has the authority to modify the terms or conditions or limitations of this Warranty without the written consent of Tru-Turf Equipment

INITIAL ASSEMBLY

When you receive the crate, the machine will be broken down into components ready for assembly. If you run into any problems during assembly, please feel free to call your local distributor or agent.

List of Components

- (1) Operation, Maintenance & Parts Manual
- (2) Machine Frame/Body

Seat Mounting Components

- (1) Drivers Seat
- (1) Seat Pin
- (2) 12mm External Circlip

Steering Arm Components

- (1) Steering Joystick
- (1) Woodruff Key

Dampener Strut (1)

Wheel Components

- (2) Tyres mounted on Wheel Rim
- (2) 1" x 1 3/4" Flat Washers
- (2) 25mm External Circlips

Trailer Arm Components

- (1) Left-side Trailer Arm
- (1) Right-side Trailer Arm
- (2) 25mm External Circlips

Tow/Latch Components

- (1) Drawbar Coupling Assembly
- (2) 2" x 3/8" UNF Hex Hd Bolts
- (2) 3/8" UNF Nyloc Nuts

Step 1: MOUNTING THE SEAT TO THE SEAT FRAME

- * Remove the circlip and 12mm diameter pin from the seat frame.
- * Place the seat down with the seat back oriented toward the rear of the machine (the front of the machine is the side where the pedals are located).

Replace 12mm diameter seat locating pin through seat frame guides and through the seat through the seat guide, replace external clip on the end of 12mm diameter rod to prevent the seat pin sliding out.

Step 2: MOUNT THE STEERING ARM TO THE MACHINE

- * Select the steering joystick
- * Place the keyed end of the steering joystick into the hole on top of the steering support cylinder (the cylinder is located directly behind the foot pedals and is approximately 12" high. There is a sealed bearing laying flat in the top and bottom of the cylinder).

Slide the steering joystick into the hole until it rests against the shoulder. If the steering joystick stops before reaching the shoulder, use emery cloth to polish the shaft. You may also use a light oil on the bearing and shaft to allow the shaft to slide in freely.

Lift up the smoothing roller side of the machine so that you can get to the underside of the Machine. On the opposite side of the machine from the smoothing rollers, there is a trailer pivot pin (25mm in diameter) welded on the top of the body which will prevent the machine from rolling on its side.

VERY IMPORTANT: Brace the machine so that it will not fall over. Secure the machine with a rope or blocks to prevent the machine from falling.

Locate the joystick shaft on the underside of the machine (Again, this is toward the front of the machine).

Locate the Woodruff Key. The Woodruff Key is a 3/4" x 3/16" thick piece of steel in the shape of a half circle.

- * Place the round-side of the Woodruff Key into the rectangular key slot on the
- * Joystick shaft. Hammer or squeeze with pliers into place. When complete, the flat side of the Woodruff Key should be parallel to the steering rod.
- * Place the steering linkage assembly onto the steering shaft. The "shiny" arm or rod end should be on the ground-side or lower side of the steering arm assembly.

MOUNT THE STEERING ARM TO THE MACHINE continued

- * Line up the "square groove" on the steering arm assembly with the Woodruff Key with your hand, slide the assembly onto the joystick toward the bearing as far as it will go and tighten the 5/16 Grub screw up against the Joystick shaft. Make sure that the steering linkage remains aligned with the Woodruff Key and the Woodruff Key remains parallel to the rod when sliding the steering linkage on the rod.

IMPORTANT - Do not reduce the thickness of the Woodruff Key. It is designed to be a no tolerance fit.

Step 3: ATTACHING THE RH TRAILER ARM TO MACHINE BODY

Locate the trailer arm support axle (1" in diameter) which extends out on the side of the machine, remove the circlip from the axle. Slide right side trailer arm, onto the axle, replace the circlip, ensuring it is located in the groove correctly.

Grease both trailer arm support axles.

Step 4: ATTACHING DAMPENER STRUT & LH TRAILER ARM

Locate the trailer arm support axle (1" in diameter) which extends out on the side of the machine, remove the circlip from the axle. Hold the trailer arm in the vertical position and slide it part way onto the axle, ensuring the trailer arm will rotate past the trailer arm stop. Locate dampener strut. remove packing from the unattached end.

Apply Threadlocker "Loctite" to the M10 bolt attached to the dampener strut. Screw M10 bolt into the strut support on the trailer arm.

Rotate the trailer arm forward until it clears the trailer arm stop, use a soft headed hammer and tap the trailer arm on the axle until the circlip groove is revealed, replace the circlip, ensuring it is located in the groove correctly.

Step 5: ATTACHING DRAWBAR TO TRAILER ARMS

- * Locate the drawbar assembly
- * Gather the ends of the right and left trailer arms.
- * Place the drawbar assembly between the trailer arms and align the holes.
- * Place one 2-1/4" x 3/8" bolt through each hole, fit 3/8" Nyloc nut to each bolt & tighten securely
- * Test to ensure the trailer latch is correctly locking the trailer arms in the down position. This is important when trailing the machine.

Step 6: ATTACHING WHEELS TO TRAILER ARMS

- * Locate the two wheels for the left and right side trailer arms
- * Check tyres for the correct air pressure, approximately 18psi. Do not exceed this pressure.

Remove circlips & washers from both axles, slide wheels onto axles with air valves facing outwards. Fit the 25mm flat washer & circlip on the end of the axle, ensure the circlip is fitted correctly in the axle groove.

Step 7: CORRECT DAMPENER STRUT OPERATION

- * When the roller is in the raised position & the trailer locking catch is released if the dampener strut is operating correctly it should allow the roller to lower to the ground gently, when the roller is resting on the ground push the trailer backwards gently, **(do not use excessive force)** until the trailer arm rests against the stop. The dampener strut will hold the wheels off the ground whilst rolling.
- * Drawbar assembly should raise slowly. This prevents the operator from being injured.

Step 8: REPLACE ENGINE OIL

- * A tag is placed on the engine's On/Off switch indicating you must fill the machine with oil prior to operation. The fluid placed in the machine is designed to keep the inside of the engine from rusting until it is replaced with engine oil.
- Replace engine oil as per manufacturers specifications.

Step 9: TRANSMISSION OIL TANK BREATHER

- * Unscrew plastic plug from top of tank and replace with anti-splash breather supplied.
- the circlip is fitted correctly in the axle groove.

Step 10: LUBRICATE SMOOTHING HEAD PIVOT BEARING

- * There is a grease fitting covered with a plastic cap located on the smoothing head centre ball joint swivels. Apply grease to lubricate fitting.

OPERATION

PRE-OPERATION CHECKS

- Check engine as per Honda / Kohler manual
- Ensure steering joystick has no looseness
- Check that foot pedal depresses under normal foot pressure.
- Ensure that the trailer bar locking catch mechanism is securely locked to the main frame bolt when in the trailing position.
- Check and tighten grub screws fitted to joystick steering arm, and end bearing lock rings on the rubber coated drive roller and spiker shaft.
- Grease lightly Bearings fitted to Drive Roller, Spiker shaft, Smoothing Head Carrier and the grease nipples fitted to the trailer arms. Replace plastic cap.
- Oil rod ends sparingly
- Check tyre pressure for proper operating pressure (18psi)
- Check for oil leaks - rectify before using machine.

STANDARD OPERATION PROCEDURES

- Inspect and check that the roller is serviceable prior to departing from workshop.
- Use a suitable towing vehicle to move roller from green to green.
- Maximum recommended towing speed would be equal to a motorised golf buggy. Approximately 4mph/7kph.

Towing at excess speed or across rough terrain may cause damage to the machine.

- When approaching the green do not tow roller onto the green to set up; put the roller on the fringe of the green. Put trailer in the up position, start up the roller and drive it onto the green.
- Greens can be rolled in any direction; take care to ensure there are no crease lines produced on the surface.
- It is recommended that you place the smoothing head rollers on the high side of the green when rolling. This puts more weight on the rubber drive roller and helps give more traction, thus less slipping or spinning of the drive roller will occur on the green.

STANDARD OPERATION PROCEDURES CONTINUED

Whilst becoming familiar with the roller, set the throttle at about 1/2 speed. Press the left or right foot pedal down gently but not suddenly. **Be smooth with your action**, hold in this position until nearing the edge of the green, then take your foot gently off the pedal, the roller will stop. Rest your other foot on the opposite pedal and gently apply the pressure on the pedal. It then starts to move the roller into the opposite direction. Once again be gentle with the pedal, but not sudden. By using the left and right pedal in this manner, will ensure there is no damage to the green, less wear and tear on the equipment and operator.

- The correct procedure for rolling the green is:
 - (a) Select the correct direction to roll the green
 - (b) Start on one side of the green and work your way across the green in a zigzag fashion, slightly overlapping each lap you roll: this makes sure you miss no part of the green and all of the green is rolled. Avoid coming back across the green to roll missed areas if possible. You should be able to complete the rolling of 18 greens in the same time or quicker than mowing using a triplex mower.
- When the rolling of the green is completed, move the roller onto the fringe, stop the engine, lock the trailer into the trailing position, connect it to the towing vehicle then move off to the next green to be rolled. Do not put the trailer down into the towing position on the green; damage may occur to the green from the roller tyres and body.

POINTS TO REMEMBER

- Make sure the roller is serviceable before rolling.
- Start rolling from the fringe of the green.
- Smooth operation on the foot pedals.
- Pick a point on the other side of the green to roll to.
- Do not look at the green close to the roller; it makes it difficult to steer the roller; look well ahead.
- Use 1/2 throttle until you are proficient at operating the roller.
- Move the steering joystick a little at a time to change direction; excessive movement of the joystick makes it difficult to maintain a straight line.
- Roll in straight lines.
- Do not leave the engine running with the roller parked on the green; the engine vibration will cause roller depressions on the green.
- Move off the green when rolling is complete before putting the trailer in the down position.
- When rolling steep greens and the engine stops, check engine oil level. The engine is fitted with a safety switch; when the engine oil level is low the engine will stop.

MAINTENANCE

- Stop engine before performing any maintenance
- Service the Honda or Kohler engine according to the manufacturers maintenance schedule.
- Check transmission oil level on oil tank sight glass. Oil level should remain at a minimum of 25 mm (1") & a maximum of 40mm (1 ½") from the top of the tank.
- As a guide to correct transmission oil use Mobil 1 or equivalent.

TRANSMISSION (PUMP, EATON 11)

- Change oil every 500 hours or annually, whichever occurs first
- Change hydraulic oil filter every 500 hours or annually, whichever occurs first.
- Only use the manufacturer's recommended replacement oil filter
- When fitting the filter, follow the instructions supplied with the filter. This will ensure that the filter remains tight and no leaks occur
- Check hard line oil pipes for leaks and tightness on a regular basis
- Check transmission oil level on oil tank sight glass. Oil level should remain at a minimum of 25mm (1") and at a maximum of 40mm (1.5") from the top of the tank
- As a guide to correct transmission oil, use Mobil 1 5W 50 or (Australia only – Penrite Synthetic 5 SAE 5W-60).

STORING

- It is important to store this roller in the towing position. This ensures the trailer strut is in the closed position, protecting the shaft from corrosion, then failure.

SERVICE OF DRIVE SYSTEM

- *REPLACEMENT* - Use only the chain and sprockets recommended.
- *TENSIONING THE DRIVE CHAIN* - No adjustment is required; the chain tension is automatically adjusted.

LUBRICATION

- Lubricate Drive Chain with WD40 or equivalent (CRC; Penetrene etc.) prior to rolling the Greens

SERVICE OF BEARINGS

- Whilst the Roller is suspended by the Trailer, check operational smoothness of the bearings fitted to the Roller by rotating the Rollers by hand. If bearing roughness is detected, replace faulty bearings

CHANGE OIL

Change oil and service as per Servicing Schedule enclosed in the Manual

FAULT FINDING

ROLLER LOOSES POWER OR SLOWS DOWN WHEN OPERATING

- Check:
- * Correct oil is used in transmission (Mobil 1 or equivalent)
 - * Smoothing Rollers & Drive roller bearings are not seized
 - * Drive chain seized
 - * Engine problems
 - * Faulty transmission

ROLLER WILL NOT MOVE ONE OR EITHER WAY

- Check:
- * Chain is okay
 - * Foot control not operating - check all arms are secure
 - * For Sheared Pulley Key
 - * Ensure Transmission neutral lever is in the upright position

ROLLER WILL NOT STEER

- Check:
- * Joystick locating grub screw is tight
 - * Woodruff Key is in place
 - * Rod ends are connected to smoothing roller head and the steering arm
 - * Centre swivel bearing on top centre of smoothing rollers has not seized

ROLLER HAS EXCESSIVE VIBRATION

- Check:
- * Disconnect engine-to-transmission and isolate the drive chain to determine whether the problem is in the engine or into the transmission
 - * If engine is at fault contact your nearest Honda agent for rectification
 - * If the transmission is at fault, repair or replace as necessary

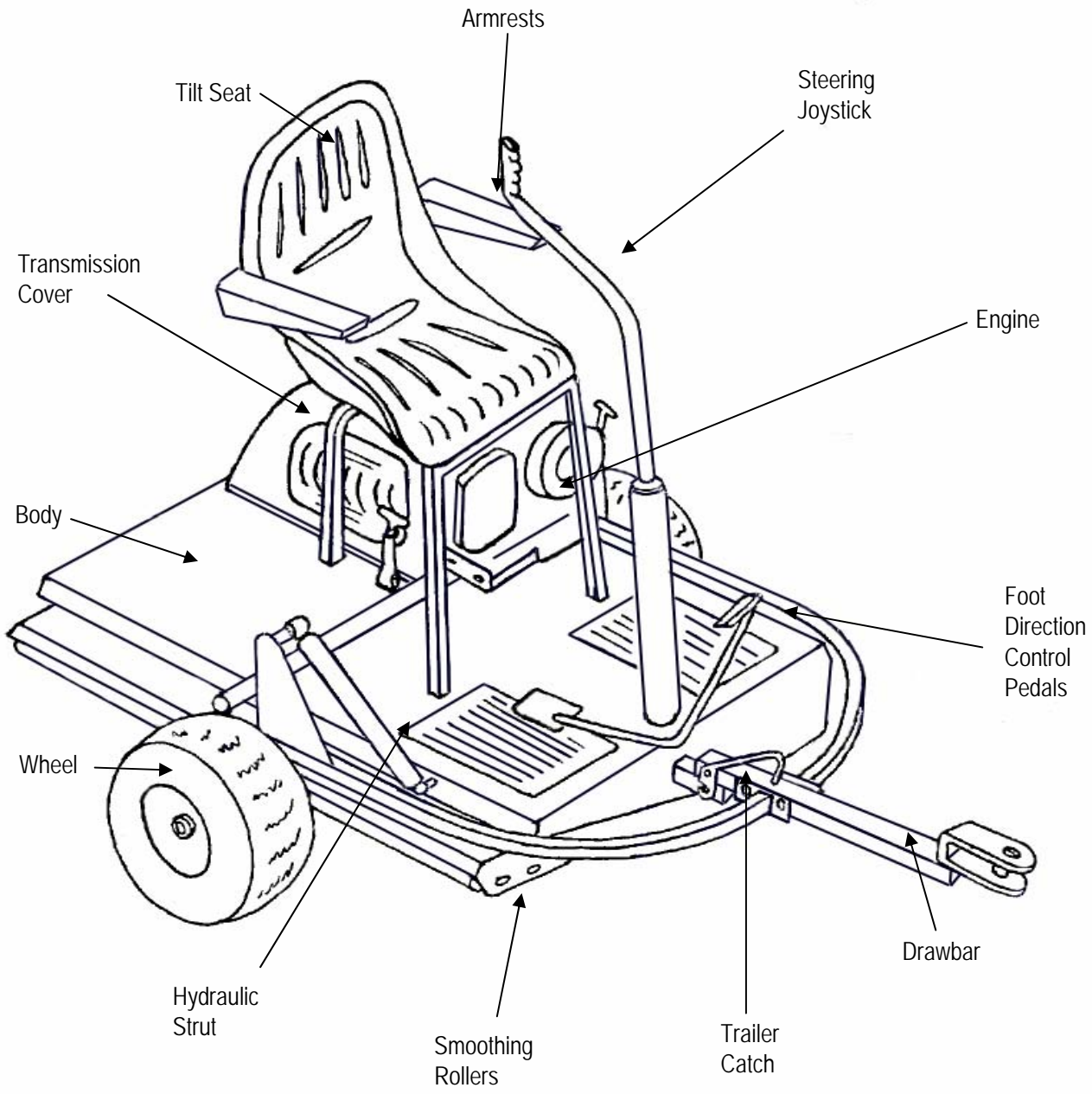
SMOOTHING ROLLERS SEIZED

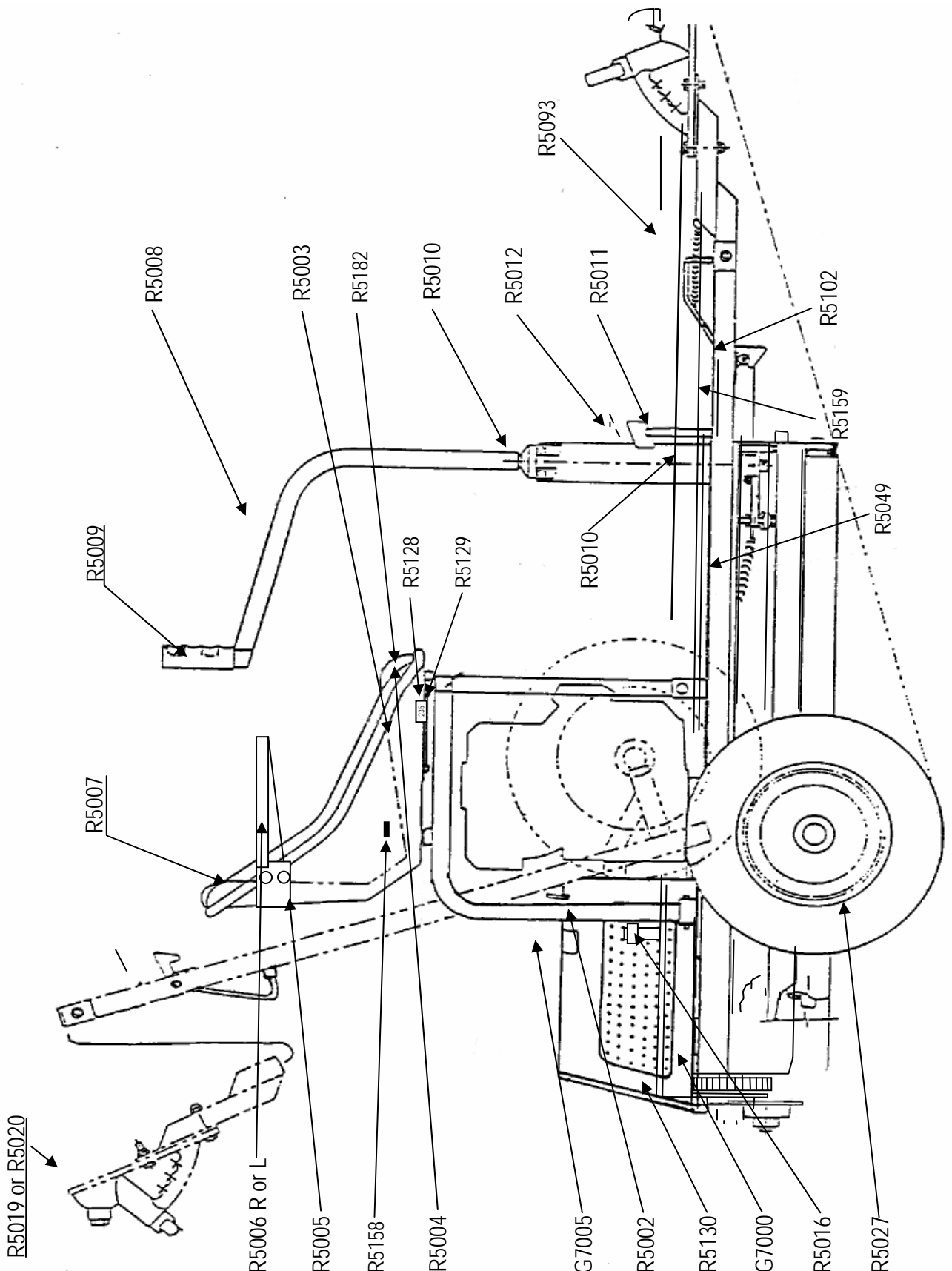
- Check:
- * Bearing has not seized

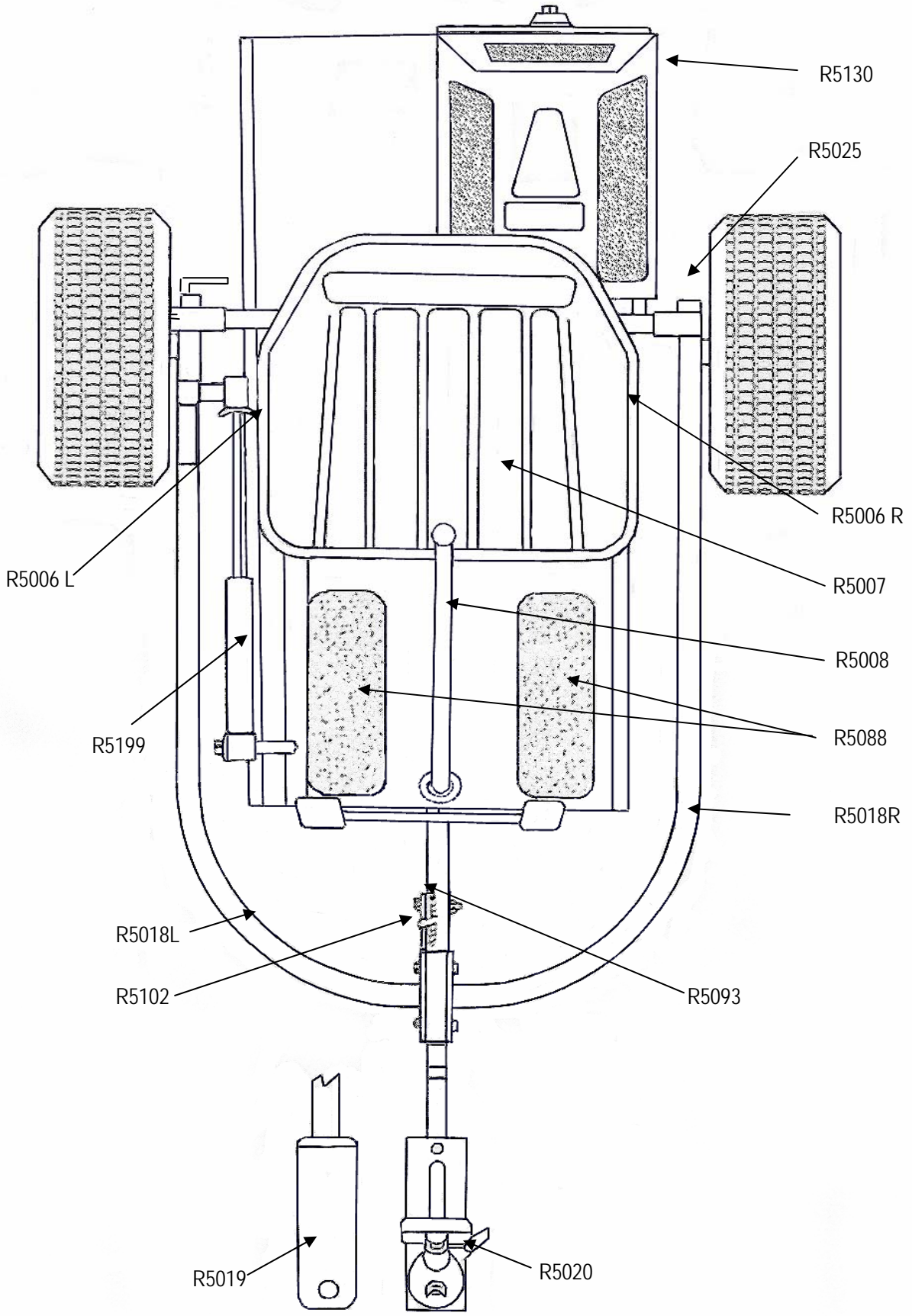
RUBBER DRIVE ROLLER WILL NOT ROTATE

- Check:
- * Roller shaft end bearings have not seized
 - * Broken chain

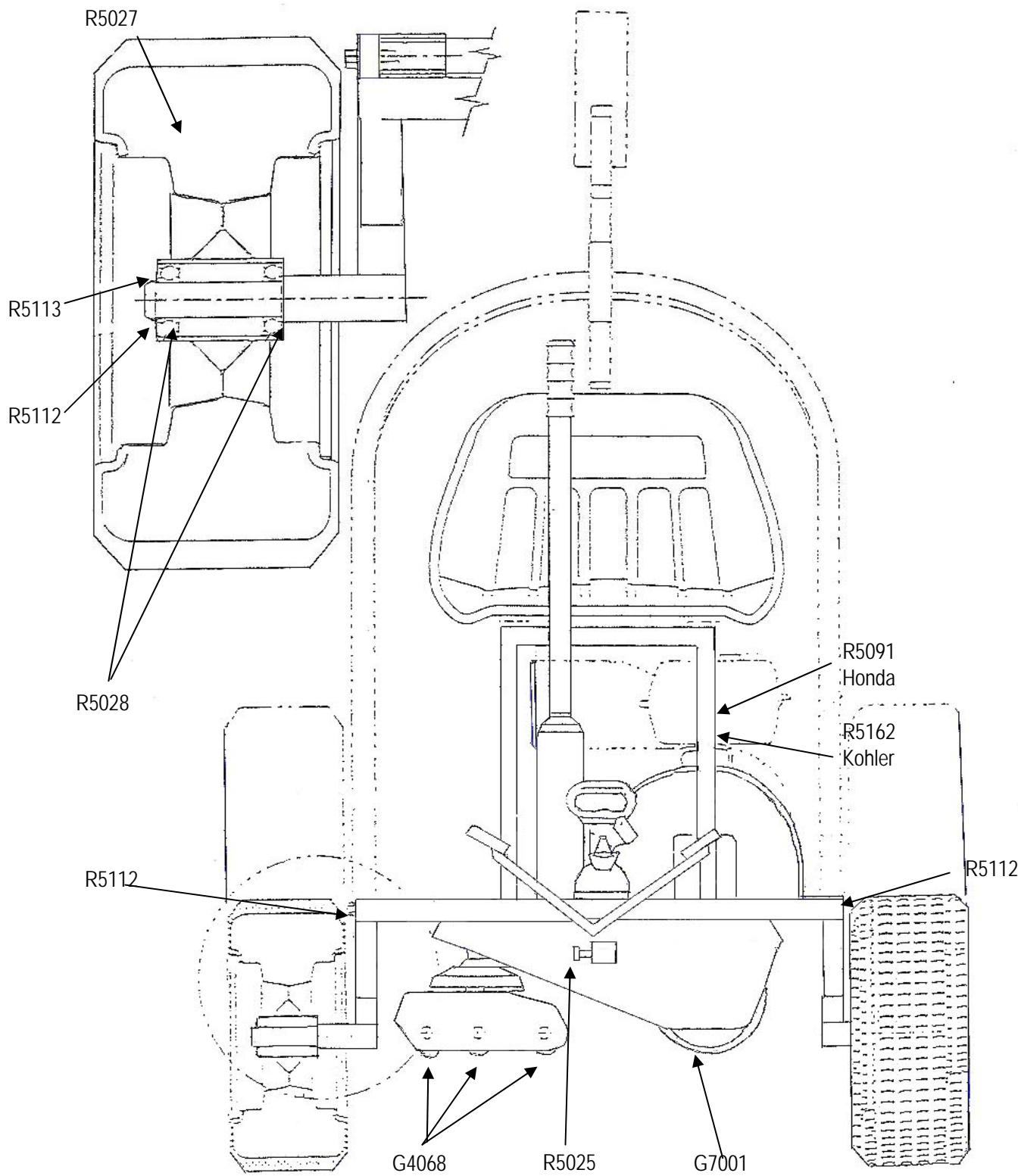
Machine Components

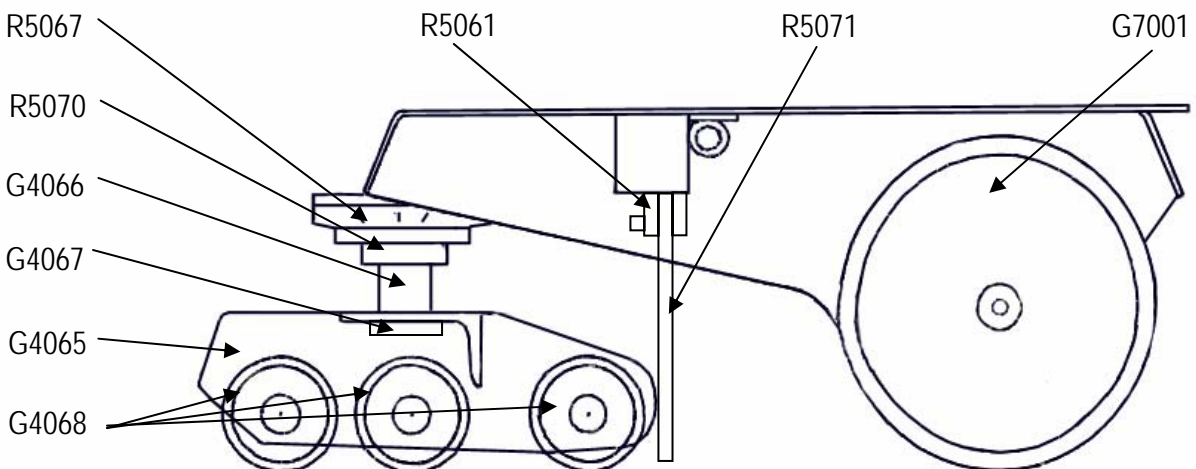
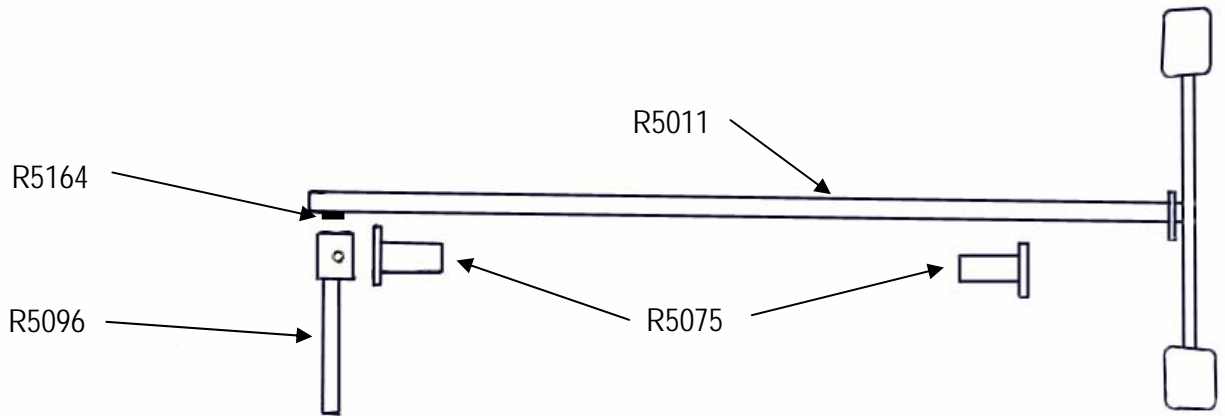
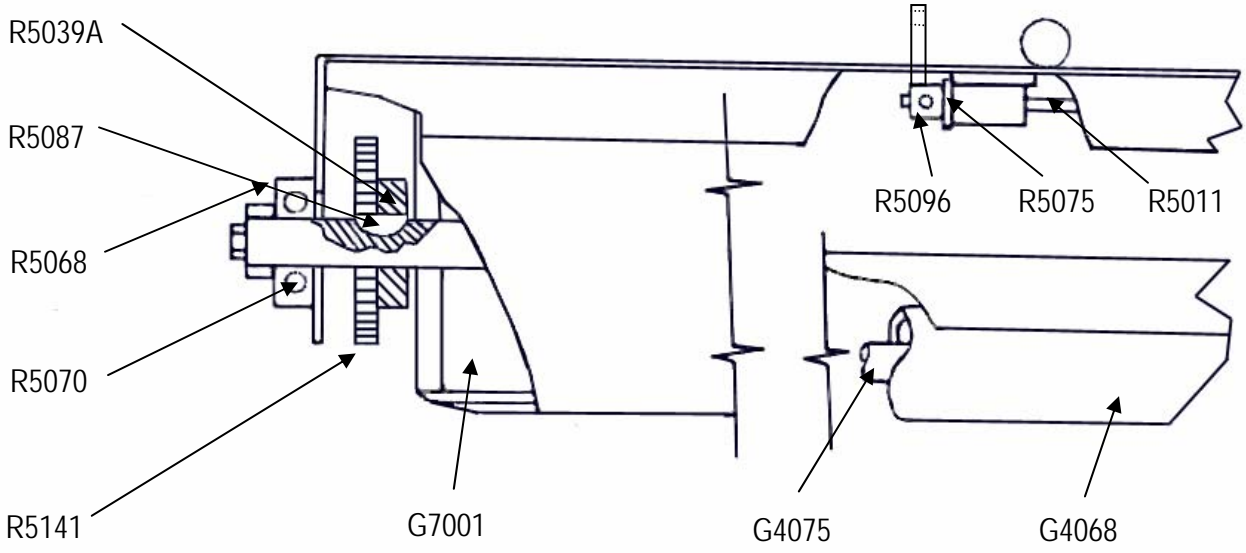


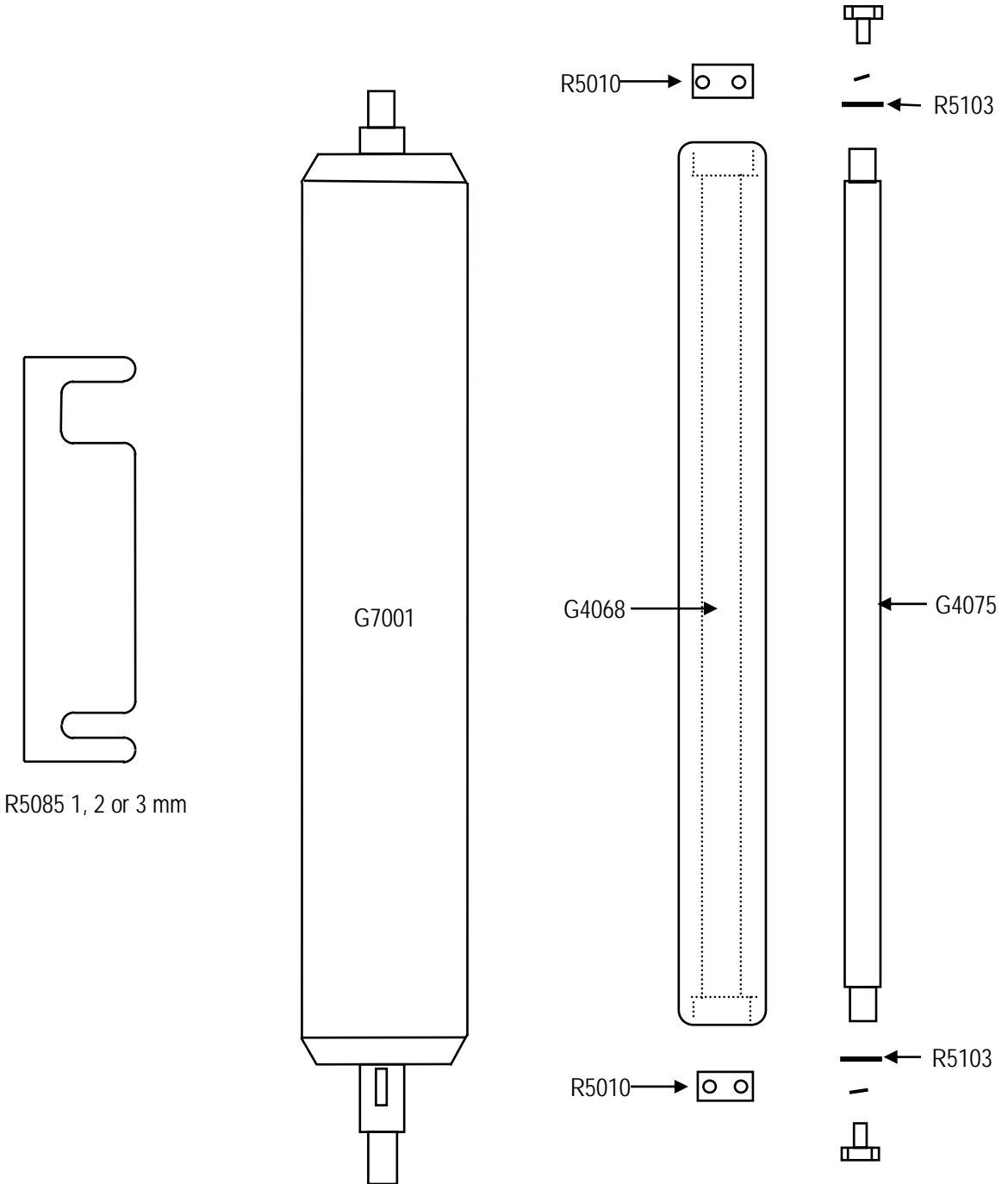


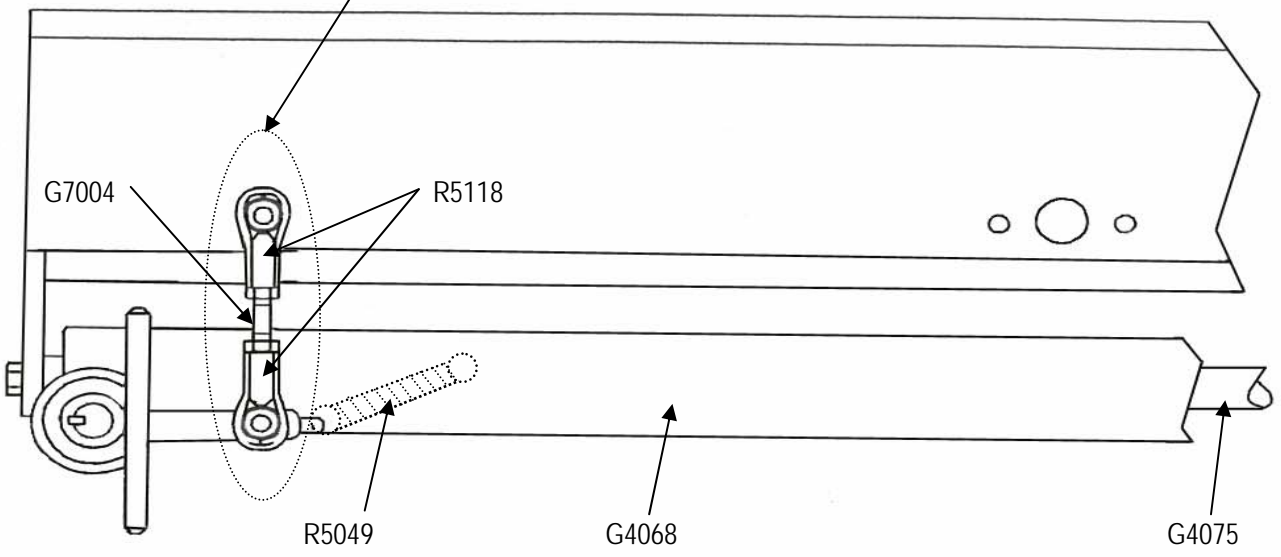
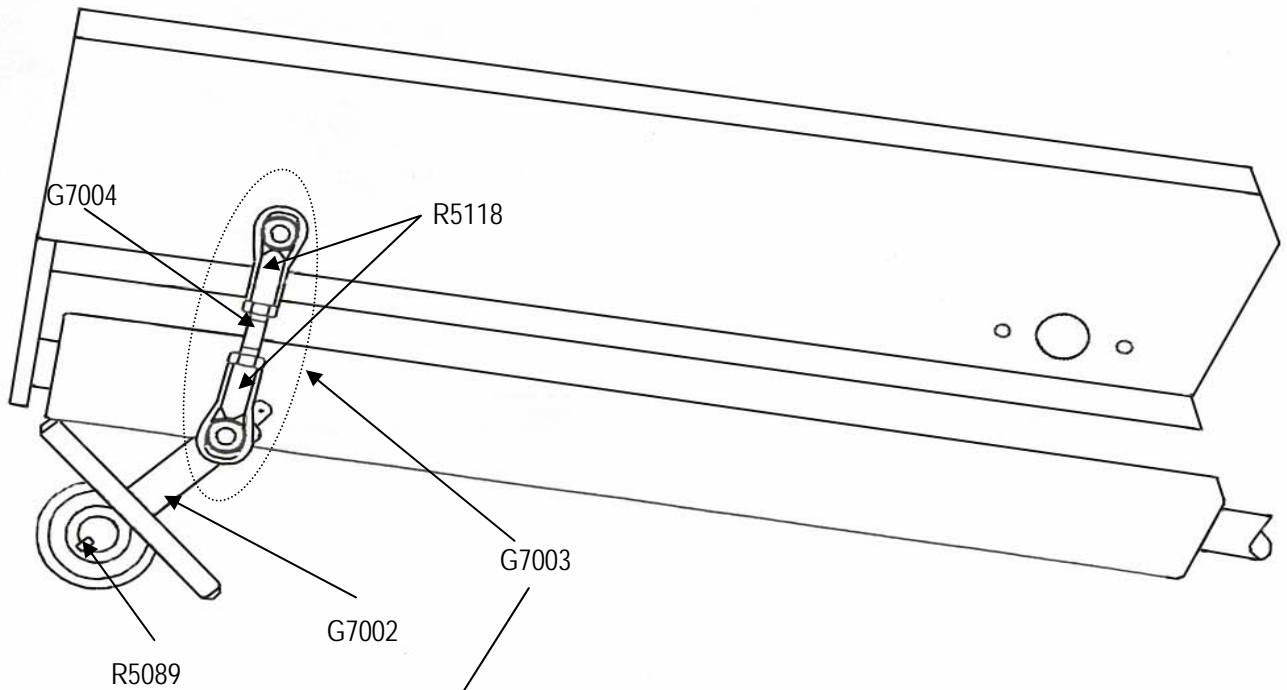


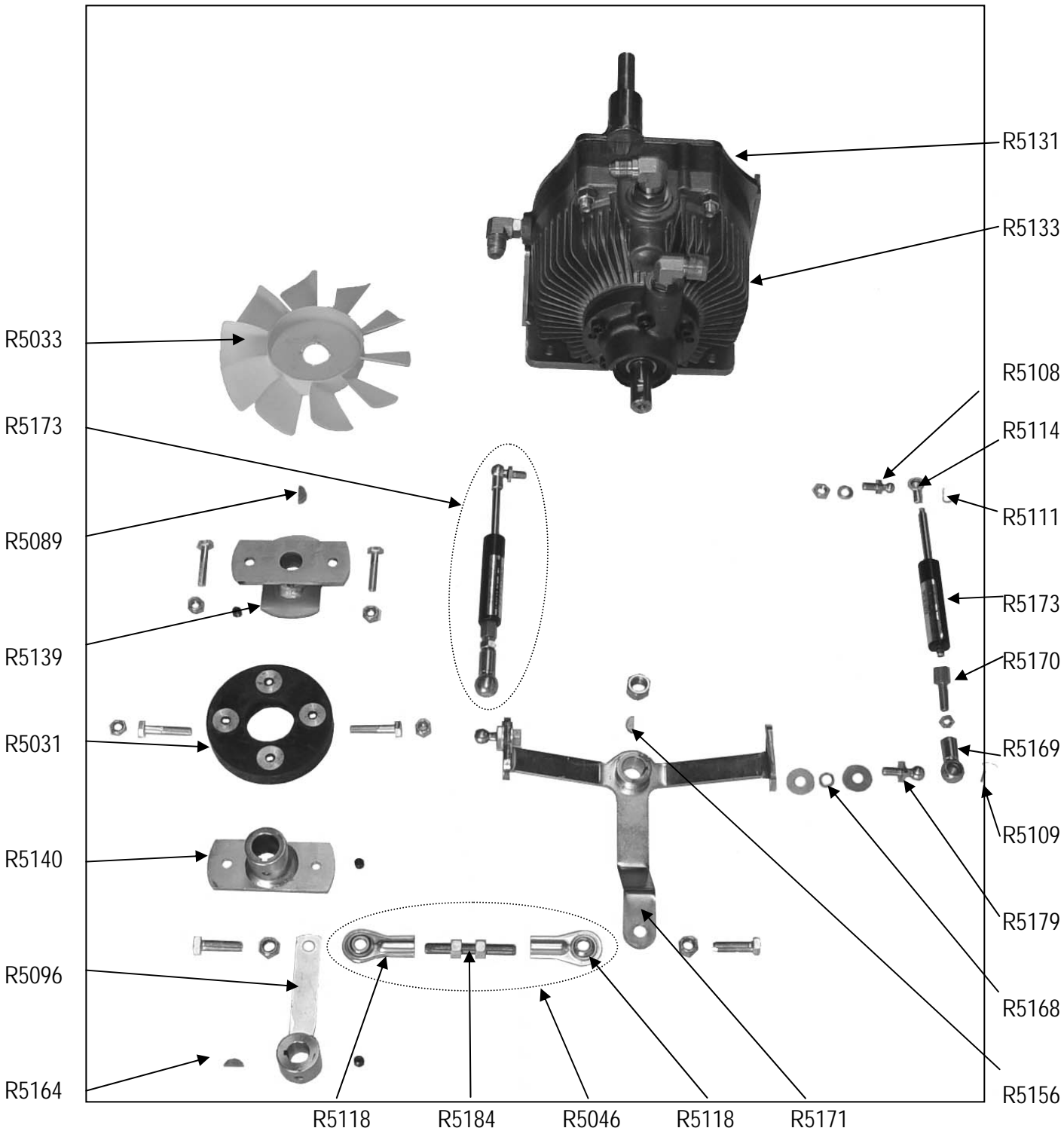
GR11000 GOLF GREEN ROLLER - Operation, Maintenance & Parts Manual

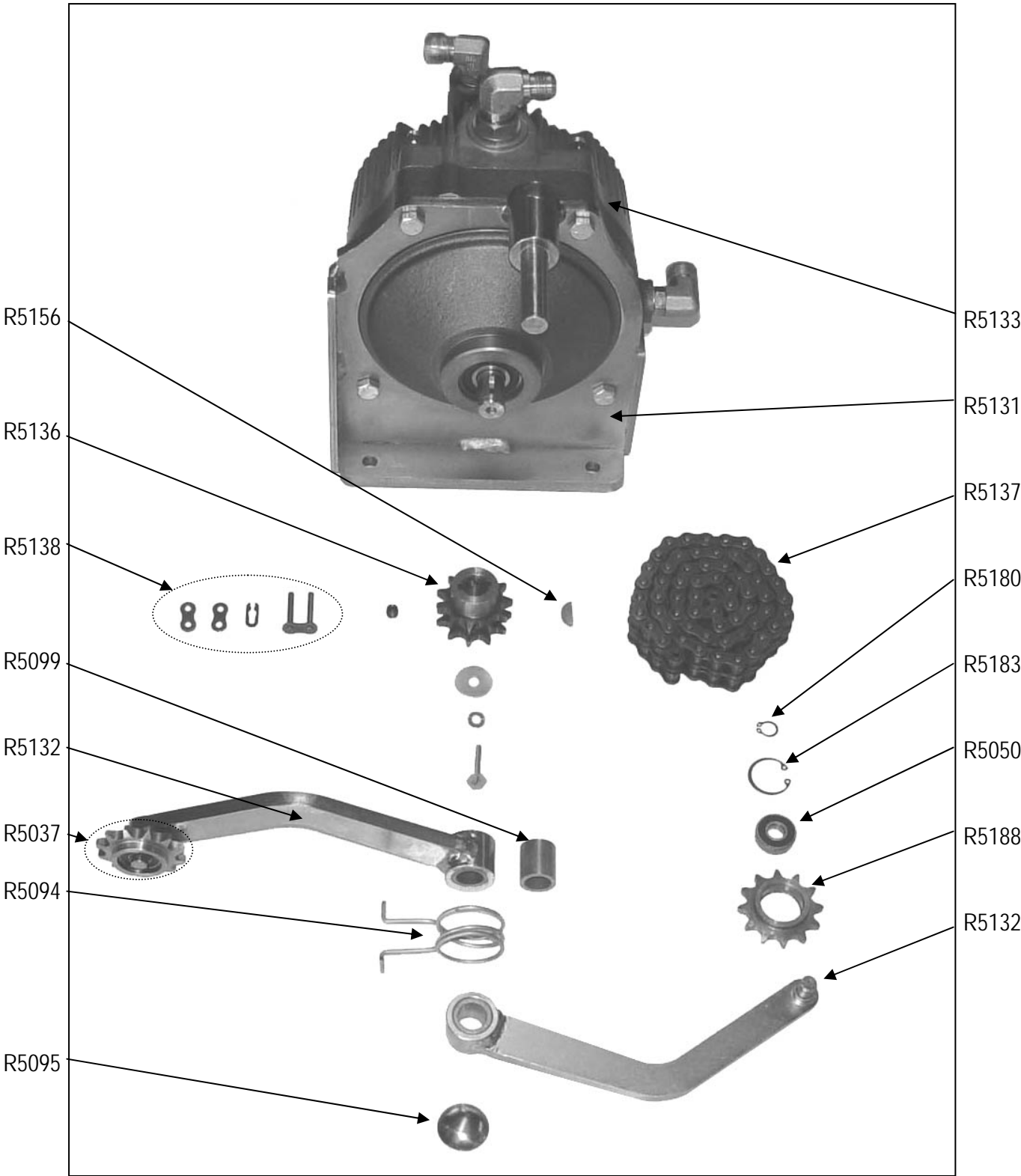


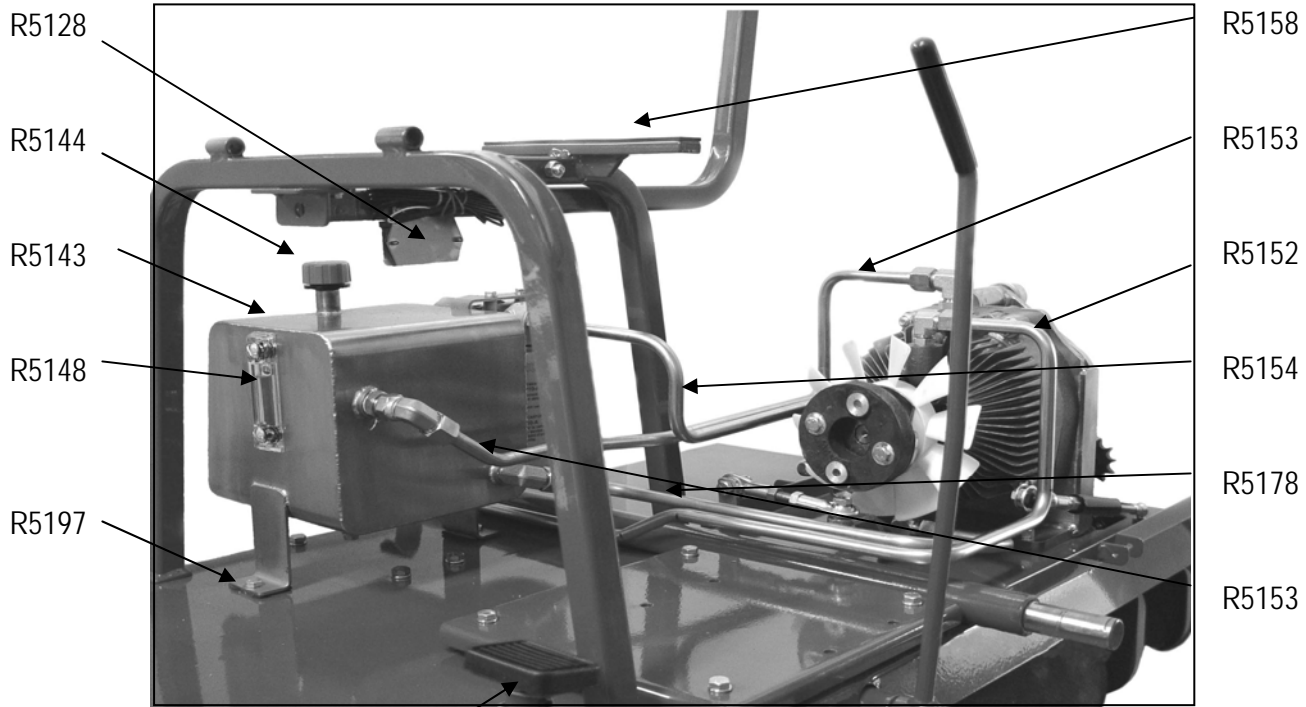










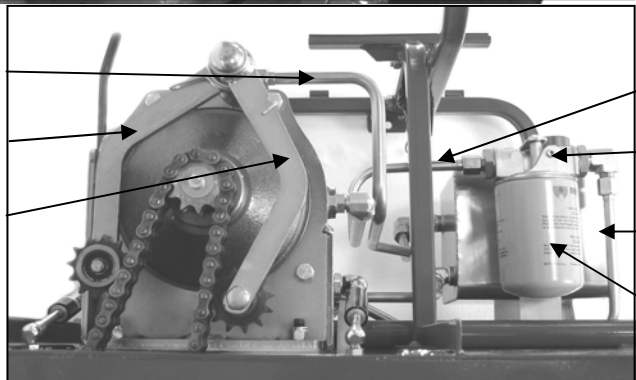


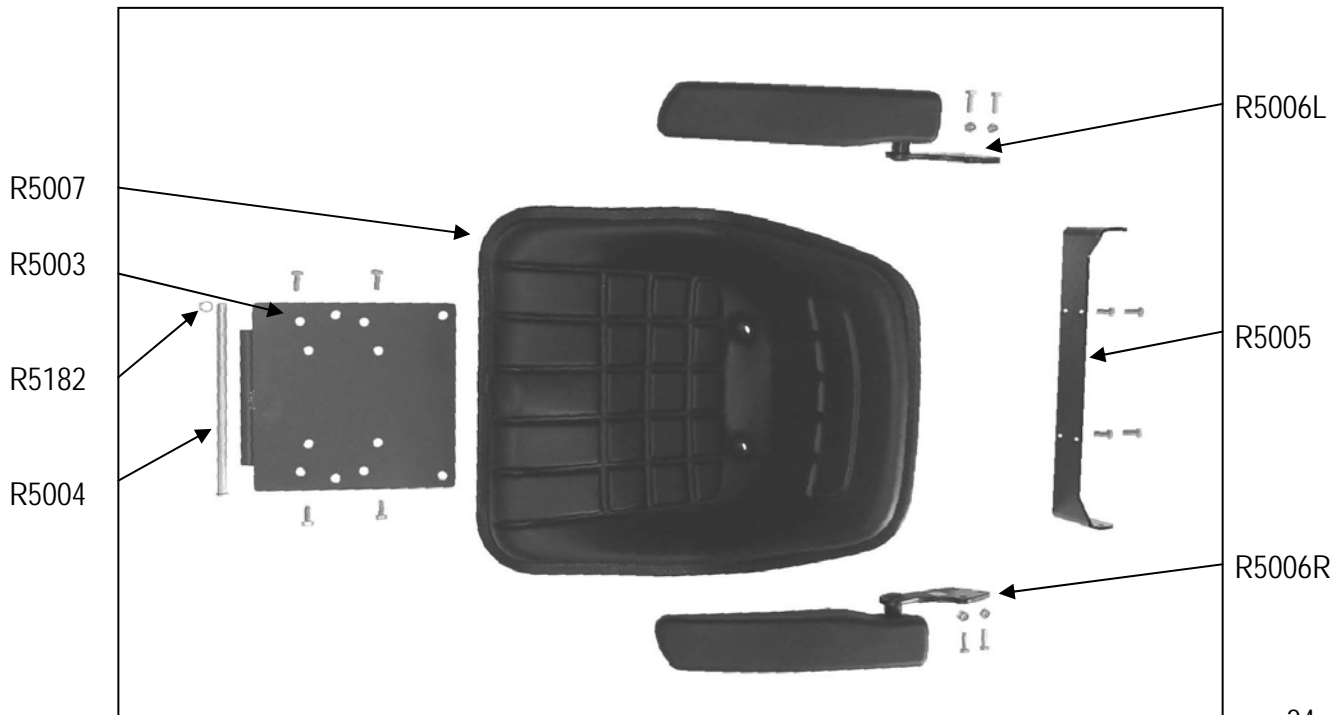
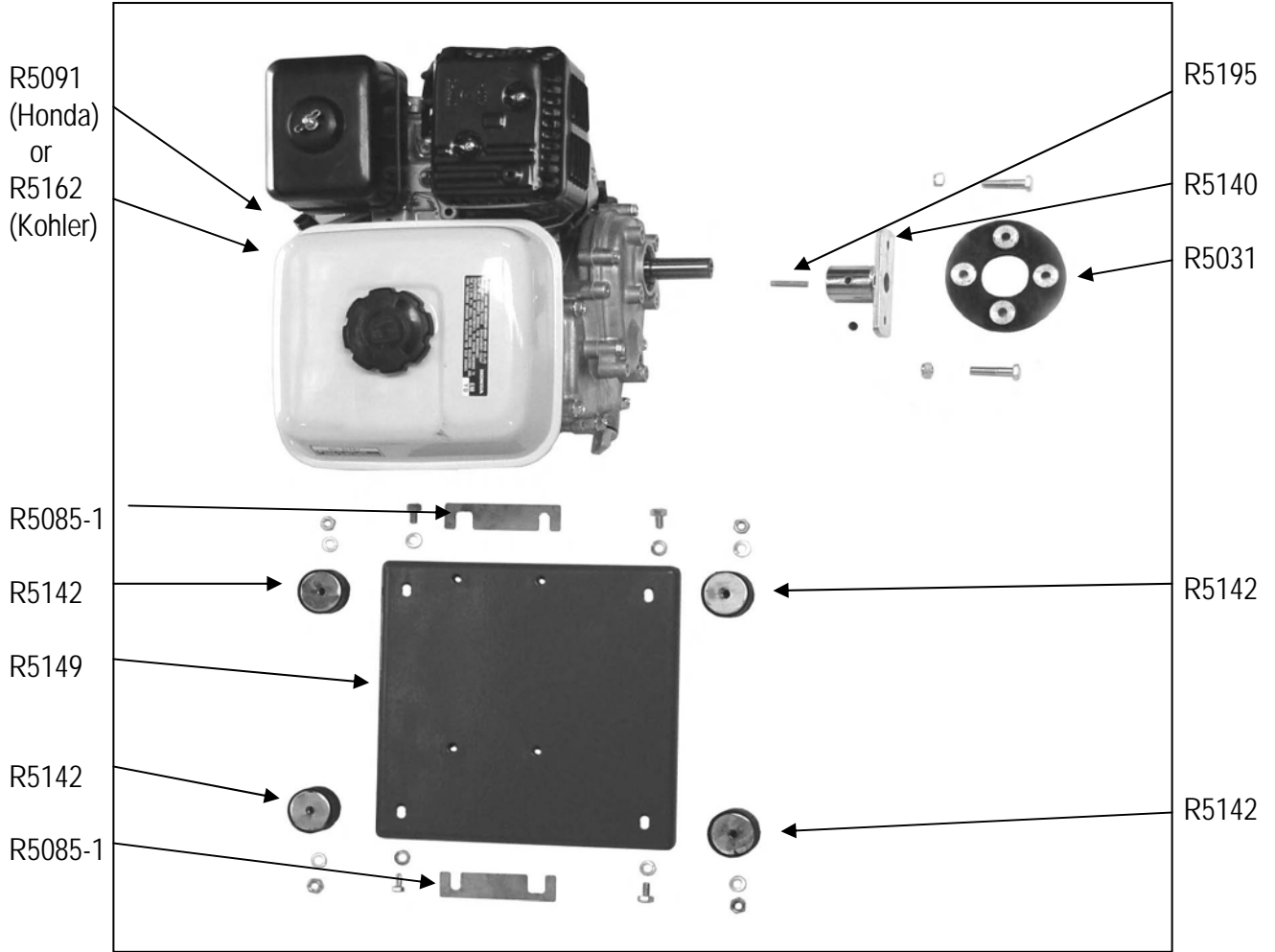
PIPE KIT - R5177
 Consisting of:
 R5178 A
 R5152 B
 R5153 C
 R5154 D

R5174
 R5175
 R5176

R5153
 R5132
 R5132

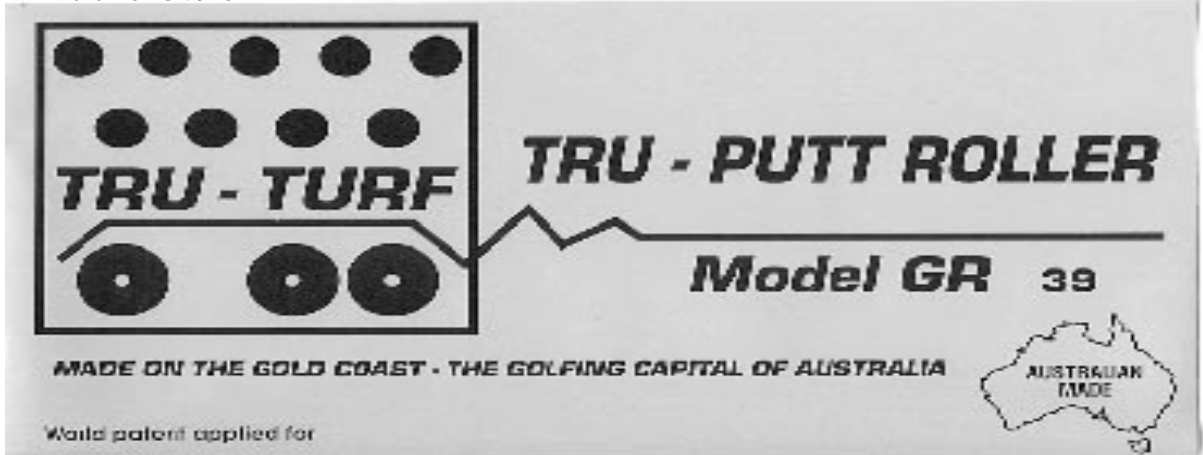
R5154
 R5146
 R5152
 R5147





Part No. G4015

Name & Model attached to rear of Transmission Cover



DANGER
DO NOT OPERATE MACHINE
WITHOUT COVER IN PLACE.


Attached to the Body beside the Transmission Cover

PRESS & HOLD PEDAL TO MOVE LEFT

Attached to the Body under the Foot Pedals

PRESS & HOLD PEDAL TO MOVE RIGHT

WHEN ROLLING SLOPING GREENS PLACE
THESE ROLLERS ON THE HIGH SIDE.



Attached to the front top of the Smoothing Head

CAUTION
ENSURE FRONT OF ROLLER IS
TOUCHING THE GROUND BEFORE
RELEASING THE TRAILER LOCK

Attached to the front of both trailer arms at the Release Catch position

TRU-TURF EQUIPMENT
International Agencies
+ 61 7 5594 7199
Email: truturf@ausinfo.com.au
Website: www.truturf.com
SERIAL NUMBER. GR1056

Attached to side of body.

PARTS LIST

PART NUMBER	PART DESCRIPTION
G7000	Main Body
G7001	Drive Roller, rubber coated
G7002	Steering Arm
G7003	Steering Connecting Rod, complete
G7004	Rod connecting steering arm – smoothing head
G7005	Sticker Safety pack
G4065	Smoothing Head
G4066	Smoothing Head Spacer
G4067	Smoothing Head Bearing Carrier
G4068	Smoothing Rollers
G4075	Roller Shaft Stepped
R5002	Seat Frame
R5003	Seat Base
R5004	Seat Base Pin
R5005	Arm Rest Support
R5006R	Arm Rest RH
R50006L	Arm Rest LH
R5007	Seat
R5008	Joystick
R5009	Hand Grip
R5010	Bearing
R5011	Foot Pedal
R5012	Foot Pedal Pad
R5016	Rubber Cover Catch
R5018R	Trailer Arm RH
R5018L	Trailer Arm LH
R5019	Drawbar (pin type)
R5020	Drawbar (50mm Ball Coupling)
R5020A	Drawbar to suit R5020
R5025	Plug Kit; Plastic; Trailer
R5027	Tyre & Wheel Complete
R5028	Bearing; 6205; To suit R5027
R5031	Coupling; Rubber
R5033	Fan
R5037	Sprocket Kit; Simplex
R5039A	Bush; Taper Lock
R5046	Rod Unit; Connecting Arm; Foot Pedal to Yoke; Transmission
R5049	Spring; Steering Return
R5050	Bearing; 6000
R5061	Strap; Mud Flap
R5067	Housing; F205; 4 hole; for R5070 Bearing
R5068	Housing; LFL5J; 2 hole for R5070 Bearing
R5070	Bearing; B5
R5071	Mud Flap

GR11000 PARTS LIST CONTINUED

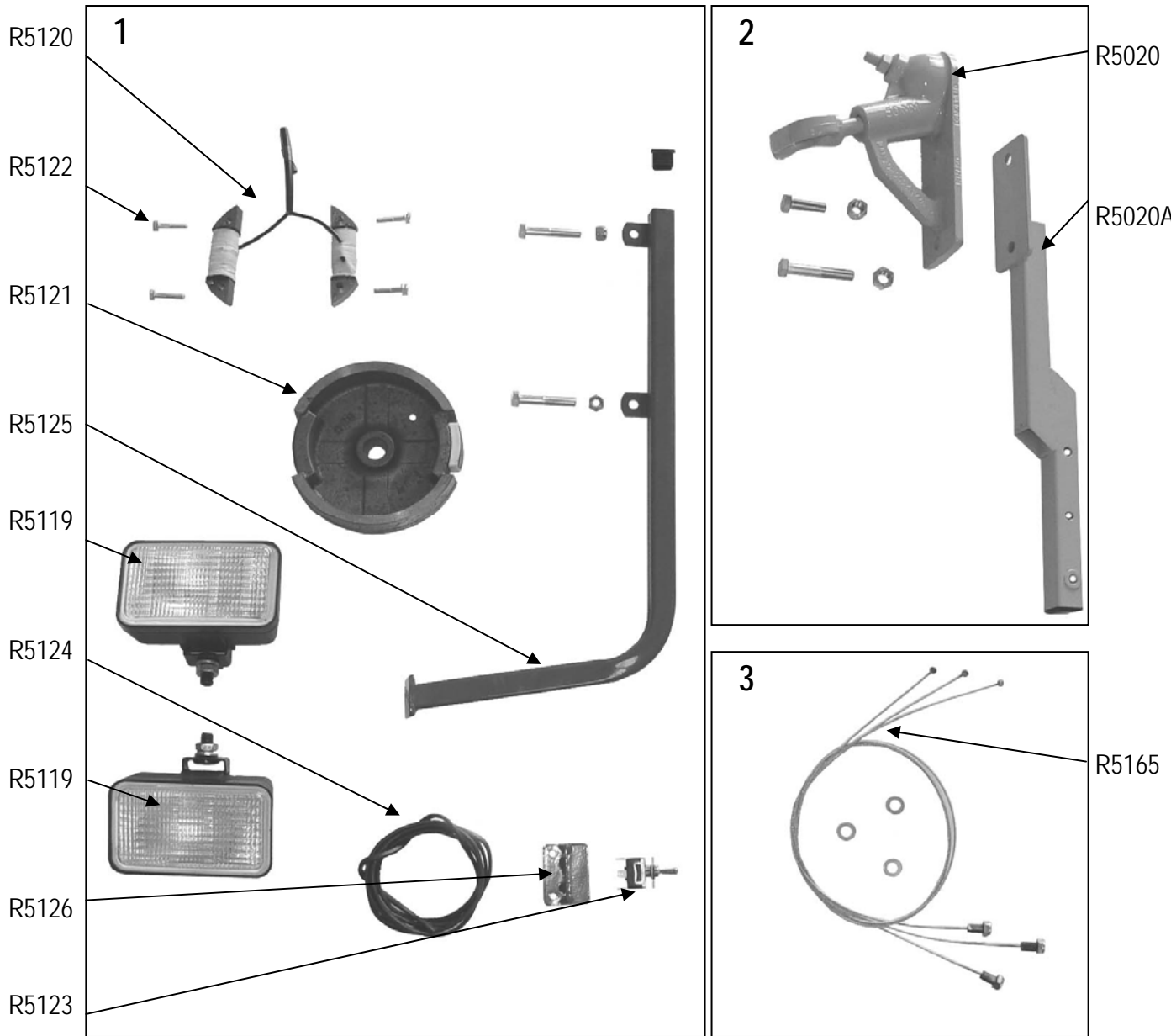
PART NUMBER	PART DESCRIPTION
R5075	Bush; Nylon; Black
R5085	Shim 1,2 or 3mm Thick; Honda/Kohler Engine
R5087	Key, Woodruff
R5088	Mat; Foot
R5089	Key; Woodruff; for Joystick
R5091	Engine; 5.5 hp; Honda
R5093	Spring; Coil; Drawbar
R5094	Spring; Arm; Chain Tensioner
R5095	Washer; Capped
R5096	Arm; Foot Pedal; for Eaton 11 Transmission
R5099	Bush; Bronze; for Chain Tensioner Arms
R5102	Catch; Front Trailer; No Spring Tab; use Spring R5093
R5103	Washer; Fits Smoothing Rollers Shafts R5106 & G4075
R5108	Ball Fitting; Strut; Foot Pedal
R5109	Retainer; Clip; for R5115 Strut Cup End
R5111	Retainer; Clip; for R5114 Strut Cup End
R5112	Circlip; External; 25mm
R5113	Washer; Flat
R5114	Cup End; Strut; Foot Pedal
R5118	Rod End
R5119	Light; 50 Watt
R5128	Bracket; Hour/Tach Meter
R5129	Meter; Hour/Tach
R5130	Cover; Transmission; Eaton 11
R5131	Bracket; Transmission; Eaton 11
R5132	Arm; Chain Tensioner
R5133	Transmission; Eaton 11
R5136	Sprocket; 11 Tooth; Duplex
R5137	Chain, Duplex; Eaton 11 Transmission
R5138	Joiner; Chain; Duplex Eaton 11 Transmission
R5139	Coupling; Transmission; Eaton 11 Honda 5.5hp or Kohler 6hp
R5140	Coupling; Engine; Honda 5.5hp or Kohler 6hp – Eaton 11
R5141	Sprocket; 27tooth; Duplex; Drive Roller; Eaton 11 transmission
R5142	Cushion; Rubber; for Engine Base Plate
R5143	Tank; Stainless Steel; Transmission Oil
R5144	Breather; Tank; Transmission Oil
R5145	Plug; Drain; Tank; Transmission Oil
R5146	Housing; Filter; Tank; Transmission Oil
R5147	Cartridge; Filter; Tank; Transmission Oil
R5148	Gauge; Sight; Tank; Transmission Oil
R5149	Plate; Mounting; Engine
R5152	Pipe; Oil; B
R5153	Pipe; Oil; C

GR11000 PART LIST CONTINUED

PART NUMBER	PART DESCRIPTION
R5154	Pipe; Oil; D
R5156	Key; Woodruff; to suit R5133 Eaton 11 Transmission
R5158	Rubber Strip; Frame; Seat
R5159	Rubber Strip; Rest; Trailer
R5162	Engine; Kohler; 6 hp
R5164	Key; Woodruff
R5167	End; Bolt Type; Strut; Trailer
R5168	Spacer; Stainless Steel; Strut End; Transmission
R5169	Cup End; Long for R5173 Transmission Strut
R5170	Bolt; Adjuster; for Transmission Strut
R5171	Yoke; Eaton 11 Transmission; to suit Rear Struts
R5173	Strut; connects to R5171 Yoke
R5174	Arm, Brake Pedal
R5175	Spring, Brake Pedal
R5176	Plate; Foot; Brake Pedal
R5177	Pipe; Oil; Kit; used with R5173 Strut
R5178	Pipe; Oil; A; used with R5173 Strut
R5179	Ball Fitting; Large Flange
R5180	Circlip, External
R5182	Circlip, External
R5183	Circlip, Internal
R5184	Rod; Connects Foot Pedal Arm to Transmission Yoke
R5185	Rod; Connects Steering Arm to Smoothing Head
R5188	Sprocket 12 tooth: Supply R5037 Sprocket Kit
R5195	Key Honda & Kohler Engines
R5196	Safety Pin and Chain
R5197	Rubber Strip; Oil Tank Base
R5199	Strut Trailer

OPTIONS AVAILABLE

R5127	Light Kit
R5119	Light 2 Off (50W)
R5120	Coil; Lighting; for Honda 4.0 hp & 5.5hp
R5121	Flywheel, Honda 5.5hp
R5122	Bolt; Flange
R5123	Switch; Light
R5124	Harness; Wire
R5125	Bracket; Lights; for Light Kit
R5126	Bracket; Switch; for Light Kit
R5165	Scraper; Wire; for Smoothing Roller



1. R5127 - Lighting Kit, suits Honda 5.5 HP
2. R5020 - 50mm (2") Ball coupling
R5020A Drawbar
3. R5165- Smoothing roller, wire scrapers

